

## Small-budget bottom labelling machine

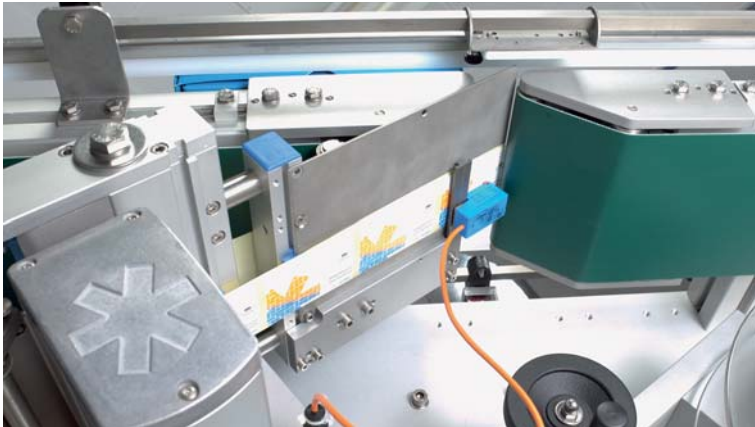
- > **Availability:** At very short notice
- > **Applicator:** The outstanding [HERMA 400](#)
- > **Flexible:** Available in two standard lengths\*: approx. 1500/2000 mm, or 60/80" and four standard widths: 50/100/150/250 mm, or 2/4/6/10"

\*individual lengths on request

The proven solution for **base labelling** of products. The machine is equipped with a fixed dispensing beak and a label recognition unit. Label application is taken care of by the conveyor belt in order to ensure maximum efficiency. Products that are already transported in the correct position (in a production line, for instance) no longer need to be turned over for labelling.

The labeller can be retracted from under the conveyor belt in order to change the label roll.





**Another advantage: the label recognition unit does not need to be adjusted for different label formats.**

## Technical data of the 552 C

Products	Length	Any
	Width	260 mm (10.2") with standard belt
	Max. height	280 mm (11")
Labels	Max. reel Ø	300 mm (12") (standard)
	Width	120 mm (4.7") (max. standard)
Labelling speed	$\frac{\text{Conveyor belt speed [m/min.]} \times 1000}{\text{Product length [mm] + gap [mm]}} = \frac{\text{Products}}{\text{min.}}$	
Power supply	230V / 50 Hz	
	115 V / 60 Hz	
Power consumption	Approx. 650 VA	

We are constantly endeavouring to improve our products.  
All technical data is therefore subject to change without prior notice.